



RS3 S  
Cylinders



# RS3 S Cylinders

## CYLINDER SECURITY – Attack Resistance

- **Breaking and pulling resistance: SNAP RESISTANCE.** Two-material steel core. 6 hardened steel segments (for increased strength) and 1 stainless steel segment (increased flexibility). Visible also after cylinder installation on the door.
- **Bumping (striking) resistance:** impossibility to obtain key blanks, existing bitted keys hard to turn into 'power keys', high number of compact-sized pins arranged radially.
- **Resistance to wax or other impression-based burglary techniques:** high number of compact-sized pins arranged radially.
- **Drill resistance: hardened steel biting system.** All the pins, drivers and inserts arranged on both sides of the cylinder and made from hardened steel.
- **Picking resistance:** not less than three rows of pins and drivers arranged radially; 2 active pins, operated by the mobile element (patented system); special pin and driver shape.
- **Push resistance:** projecting cam.

## KEY RELATED SECURITY

- **Patented key:** protected against illegal production.
- **Cloning resistance:** key equipped with a newly shaped mobile element.
- **Security Card:** for authorized key duplication only. Keys can be exclusively duplicated by CISA on producing the Security Card.
- **Biting system:** radial system, up to 19 pins, 5 rows. Key biting produces up to 8 billion different keys.

## MASTER KEYING POTENTIAL

- Extremely high potential thanks to the radial biting system (up to 19 pins arranged on 5 rows).
- 85 million different cylinders and 1 Master Key.
- Other configurations available on request.
- Different versions available for different applications (e.g.

external drives for panic exit devices, rim version electric locks, shielded padlocks).

## DURABILITY

- Tested up to 100,000 cycles.

## EN 1303:2005

- Compliant with the European Standard EN 1303:2005.
  - **Attack resistance: 2**  0  1  2
  - **Key Related Security: 6**  1  2  3  4  5  6
  - **Durability: 6**  4  5  6
- For armored door classes 4 to 6 according to the draft Standard EN 1627.

## CERTIFICATIONS

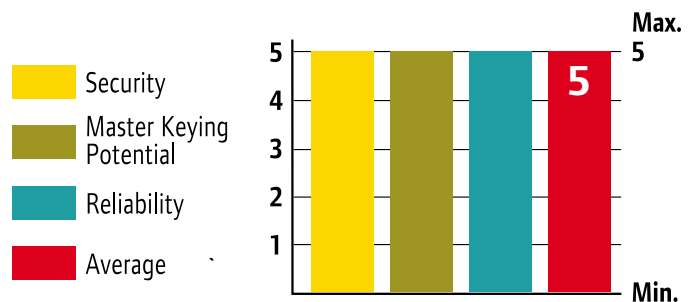
- ICIM certified: EN 1303:05 16010C62 – Europe.
- Ghost certified - Russia

## PATENTS

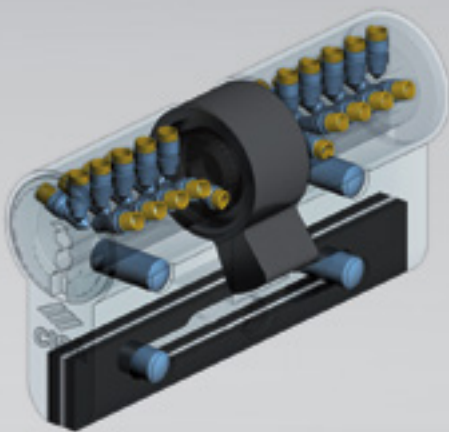
- Key: registered patent
- Snap resistant cylinder: B02003V000006.

## APPLICATIONS

Ideal product for high-security applications in residential buildings and for the armored door industry. In access control applications, it is ideally suitable for companies, shopping malls, universities and hospitals characterized by complex access management.



RS3 S has obtained the highest possible score in terms of security, master keying potential and reliability.



**Technical features of double cylinder, thumb turn shaft, adjustable shaft, single cylinder:**

**CYLINDER:**

- Bitting system: 13 active pins arranged radially on three rows, up to 19 pins on 5 rows for master keying.
- Hardened steel pins.
- Hardened steel drivers.
- Stainless steel springs.
- Brass casing with snap resistant two-material core (except for single, miscellaneous and rim cylinders).
- Brass plug.
- Finish: nickel-plated sand brass (fin. 12).
- On request: polished brass (fin. 66).
- Cam: DIN self-lubricated sintered steel. Double cylinder, single cylinder, thumb turn shaft, adjustable thumb turn shaft versions.
- Cam with clutch for emergency operation.

**KEY:**

- Non-handed, easier to use.
- With built-in mobile element.
- Material: nickel silver alloy.
- Numbered key head.
- Key neck length: 16 mm (compatible with protective roses).
- Thickness: 2.4 mm.
- Depth: 0.45 mm.

**Standard accessories for double cylinder, thumb turn shaft, adjustable shaft, single cylinder:**

- 3 keys.
- Security Card.
- Operating and Maintenance Instructions.
- Fixing screw.

**Master keying system, options on request:**

- KA (Key Arrangement); MK (1 level Master Key); GMK (2 level Master Key); GGMK (3 level Master Key); CE (central); CA (construction); C5 (5 supplied keys).
- DADA System (service cylinder plus master cylinder for double cylinder locks); 1,2,3 System (3 level rekeyable system); 1,2 System (2 level rekeyable system).

**TENDER SPECIFICATIONS:**

European profile cylinder, certified according to the Standard EN 1303:2005.

Attack Resistance degree 2.

Key Related Security degree 6.

Durability degree 6

(stand-alone configuration).

Double cylinder, thumb turn shaft, adjustable shaft, single cylinder versions must be equipped with a device to increase break and pulling resistance.

The device must also be visible after cylinder installation on doors.

Bumping resistance.

Radial bitting system with not less than 13 pins and drivers made from hardened steel.

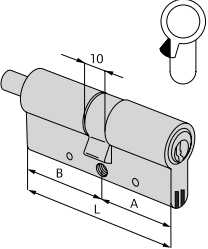
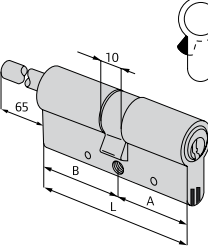
Equipped with clutch cam for emergency operation.

Patented key. Patent valid until 2025.

Non-handed key with integral mobile element.

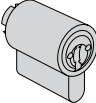
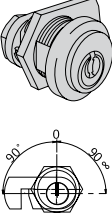
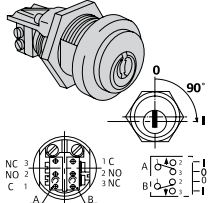
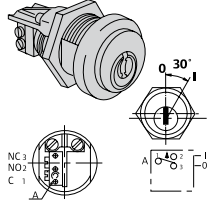
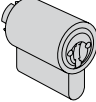
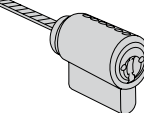
Key duplication can only be carried out by the manufacturers after Security Card submission.

Type	Description	Comm. dim.	L	A	B	Pins	Key item	Unit weight Pieces	ITEM						
									Type	Dim.	Hand	Fin.	Pers.	Spec.	
	• Snap resistant double cylinder with clutch	<b>30/30</b>	60,0	30,0	30,0	15	1 00800 00 0	0,260	1	1	<b>0L351 07 0 12 CL</b>				
		<b>30/35</b>	65,0	30,0	35,0	15	1 00800 00 0	0,270	1	1	<b>0L351 26 0 12 CL</b>				
		<b>35/35</b>	70,0	35,0	35,0	15	1 00800 00 0	0,279	1	1	<b>0L351 13 0 12 CL</b>				
		<b>40/30</b>	70,0	40,0	30,0	15	1 00800 00 0	0,290	1	1	<b>0L351 12 0 12 CL</b>				
		<b>35/40</b>	75,0	35,0	40,0	15	1 00800 00 0	0,305	1	1	<b>0L351 28 0 12 CL</b>				
		<b>30/45</b>	75,0	30,0	45,0	15	1 00800 00 0	0,305	1	1	<b>0L351 27 0 12 CL</b>				
		<b>35/45</b>	80,0	35,0	45,0	15	1 00800 00 0	0,315	1	1	<b>0L351 19 0 12 CL</b>				
		<b>40/40</b>	80,0	40,0	40,0	15	1 00800 00 0	0,315	1	1	<b>0L351 18 0 12 CL</b>				
		<b>30/50</b>	80,0	30,0	50,0	15	1 00800 00 0	0,320	1	1	<b>0L351 17 0 12 CL</b>				
		<b>35/50</b>	85,0	35,0	50,0	15	1 00800 00 0	0,330	1	1	<b>0L351 31 0 12 CL</b>				
		<b>40/45</b>	85,0	40,0	45,0	15	1 00800 00 0	0,324	1	1	<b>0L351 30 0 12 CL</b>				
		<b>30/55</b>	85,0	30,0	55,0	15	1 00800 00 0	0,327	1	1	<b>0L351 33 0 12 CL</b>				
		<b>35/55</b>	90,0	35,0	55,0	15	1 00800 00 0	0,345	1	1	<b>0L351 32 0 12 CL</b>				
		<b>40/50</b>	90,0	40,0	50,0	15	1 00800 00 0	0,338	1	1	<b>0L351 21 0 12 CL</b>				
		<b>45/45</b>	90,0	45,0	45,0	15	1 00800 00 0	0,345	1	1	<b>0L351 29 0 12 CL</b>				
		<b>30/60</b>	90,0	30,0	60,0	15	1 00800 00 0	0,342	1	1	<b>0L351 20 0 12 CL</b>				
		<b>40/55</b>	95,0	40,0	55,0	15	1 00800 00 0	0,360	1	1	<b>0L351 42 0 12 CL</b>				
		<b>35/60</b>	95,0	35,0	60,0	15	1 00800 00 0	0,360	1	1	<b>0L351 38 0 12 CL</b>				
		<b>45/50</b>	95,0	45,0	50,0	15	1 00800 00 0	0,360	1	1	<b>0L351 39 0 12 CL</b>				
		<b>35/65</b>	100,0	35,0	65,0	15	1 00800 00 0	0,375	1	1	<b>0L351 22 0 12 CL</b>				
		<b>40/60</b>	100,0	40,0	60,0	15	1 00800 00 0	0,375	1	1	<b>0L351 25 0 12 CL</b>				
		<b>45/55</b>	100,0	45,0	55,0	15	1 00800 00 0	0,372	1	1	<b>0L351 43 0 12 CL</b>				
		<b>50/50</b>	100,0	50,0	50,0	15	1 00800 00 0	0,372	1	1	<b>0L351 23 0 12 CL</b>				
		<b>30/70</b>	100,0	30,0	70,0	15	1 00800 00 0	0,390	1	1	<b>0L351 24 0 12 CL</b>				
		<b>40/70</b>	110,0	40,0	70,0	15	1 00800 00 0	0,402	1	1	<b>0L351 35 0 12 CL</b>				
		<b>50/60</b>	110,0	50,0	60,0	15	1 00800 00 0	0,402	1	1	<b>0L351 36 0 12 CL</b>				
		<b>55/55</b>	110,0	55,0	55,0	15	1 00800 00 0	0,402	1	1	<b>0L351 70 0 12 CL</b>				
		<b>30/80</b>	110,0	30,0	80,0	15	1 00800 00 0	0,406	1	1	<b>0L351 37 0 12 CL</b>				
		<b>40/80</b>	120,0	40,0	80,0	15	1 00800 00 0	0,440	1	1	<b>0L351 60 0 12 CL</b>				
		<b>50/80</b>	130,0	50,0	80,0	15	1 00800 00 0	0,480	1	1	<b>0L351 55 0 12 CL</b>				
	• Single cylinder with 8 position adjustable cam	<b>30/10</b>	40,0	30,0	10,0	15	1 00800 00 0	0,198	1	1	<b>0L314 02 0 12 CL</b>				
		<b>35/10</b>	45,0	35,0	10,0	15	1 00800 00 0	0,208	1	1	<b>0L314 07 0 12 CL</b>				
		<b>40/10</b>	50,0	40,0	10,0	15	1 00800 00 0	0,223	1	1	<b>0L314 03 0 12 CL</b>				
		<b>45/10</b>	55,0	45,0	10,0	15	1 00800 00 0	0,238	1	1	<b>0L314 08 0 12 CL</b>				
		<b>50/10</b>	60,0	50,0	10,0	15	1 00800 00 0	0,253	1	1	<b>0L314 04 0 12 CL</b>				
		<b>60/10</b>	70,0	60,0	10,0	15	1 00800 00 0	0,283	1	1	<b>0L314 05 0 12 CL</b>				
		<b>65/10</b>	75,0	65,0	10,0	15	1 00800 00 0	0,298	1	1	<b>0L314 21 0 12 CL</b>				
		<b>70/10</b>	80,0	70,0	10,0	15	1 00800 00 0	0,313	1	1	<b>0L314 06 0 12 CL</b>				
		<b>80/10</b>	90,0	80,0	10,0	15	1 00800 00 0	0,343	1	1	<b>0L314 20 0 12 CL</b>				
		<b>95/10</b>	105,0	95,0	10,0	15	1 00800 00 0	0,388	1	1	<b>0L314 13 0 12 CL</b>				

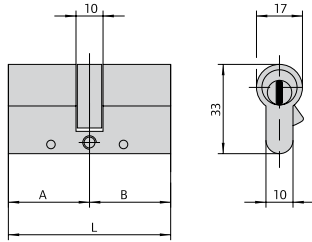
Type	Description	Comm. dim.	L	A	B	Pins	Key item	Unit weight Kg	Pieces	ITEM				
										Type	Dim.	Hand	Fin.	Pers.
 <ul style="list-style-type: none"> <li>• Snap resistant double cylinder pre-set for thumb turn installation</li> <li>• ON REQUEST: thumb turn devices -item 1.06353.00 -item 1.06354.00</li> </ul>	<b>30/30</b>	60,0	30,0	30,0	15	1 00800 00 0	0,271	1	<b>1 0L352 07 0 12 CL</b>					
	<b>30/35</b>	65,0	30,0	35,0	15	1 00800 00 0	0,292	1	<b>1 0L352 26 0 12 CL</b>					
	<b>35/30</b>	65,0	35,0	30,0	15	1 00800 00 0	0,295	1	<b>1 0L352 81 0 12 CL</b>					
	<b>30/40</b>	70,0	30,0	40,0	15	1 00800 00 0	0,295	1	<b>1 0L352 82 0 12 CL</b>					
	<b>40/30</b>	70,0	40,0	30,0	15	1 00800 00 0	0,305	1	<b>1 0L352 12 0 12 CL</b>					
	<b>35/35</b>	70,0	35,0	35,0	15	1 00800 00 0	0,320	1	<b>1 0L352 13 0 12 CL</b>					
	<b>40/35</b>	75,0	40,0	35,0	15	1 00800 00 0	0,320	1	<b>1 0L352 83 0 12 CL</b>					
	<b>30/45</b>	75,0	30,0	45,0	15	1 00800 00 0	0,324	1	<b>1 0L352 27 0 12 CL</b>					
	<b>35/40</b>	75,0	35,0	40,0	15	1 00800 00 0	0,334	1	<b>1 0L352 28 0 12 CL</b>					
	<b>30/50</b>	80,0	30,0	50,0	15	1 00800 00 0	0,350	1	<b>1 0L352 17 0 12 CL</b>					
	<b>35/45</b>	80,0	35,0	45,0	15	1 00800 00 0	0,350	1	<b>1 0L352 19 0 12 CL</b>					
	<b>40/40</b>	80,0	40,0	40,0	15	1 00800 00 0	0,354	1	<b>1 0L352 18 0 12 CL</b>					
	<b>45/35</b>	80,0	45,0	35,0	15	1 00800 00 0	0,354	1	<b>1 0L352 85 0 12 CL</b>					
	<b>40/45</b>	85,0	40,0	45,0	15	1 00800 00 0	0,354	1	<b>1 0L352 30 0 12 CL</b>					
	<b>50/35</b>	85,0	50,0	35,0	15	1 00800 00 0	0,354	1	<b>1 0L352 94 0 12 CL</b>					
	<b>45/40</b>	85,0	45,0	40,0	15	1 00800 00 0	0,354	1	<b>1 0L352 84 0 12 CL</b>					
	<b>30/60</b>	90,0	30,0	60,0	15	1 00800 00 0	0,354	1	<b>1 0L352 20 0 12 CL</b>					
	<b>40/50</b>	90,0	40,0	50,0	15	1 00800 00 0	0,354	1	<b>1 0L352 21 0 12 CL</b>					
	<b>45/45</b>	90,0	45,0	45,0	15	1 00800 00 0	0,354	1	<b>1 0L352 29 0 12 CL</b>					
	<b>40/55</b>	95,0	40,0	55,0	15	1 00800 00 0	0,374	1	<b>1 0L352 42 0 12 CL</b>					
	<b>55/40</b>	95,0	55,0	40,0	15	1 00800 00 0	0,374	1	<b>1 0L352 98 0 12 CL</b>					
	<b>50/50</b>	100,0	50,0	50,0	15	1 00800 00 0	0,415	1	<b>1 0L352 23 0 12 CL</b>					
	<b>45/55</b>	100,0	45,0	55,0	15	1 00800 00 0	0,415	1	<b>1 0L352 43 0 12 CL</b>					
	<b>55/45</b>	100,0	55,0	45,0	15	1 00800 00 0	0,415	1	<b>1 0L352 99 0 12 CL</b>					
<b>55/50</b>	105,0	55,0	50,0	15	1 00800 00 0	0,415	1	<b>1 0L352 64 0 12 CL</b>						
<b>60/50</b>	110,0	60,0	50,0	15	1 00800 00 0	0,415	1	<b>1 0L352 89 0 12 CL</b>						
<b>55/60</b>	115,0	55,0	60,0	15	1 00800 00 0	0,425	1	<b>1 0L352 71 0 12 CL</b>						
<b>60/60</b>	120,0	60,0	60,0	15	1 00800 00 0	0,430	1	<b>1 0L352 40 0 12 CL</b>						
<b>65/55</b>	120,0	65,0	55,0	15	1 00800 00 0	0,430	1	<b>1 0L352 86 0 12 CL</b>						
 <ul style="list-style-type: none"> <li>• Snap resistant double cylinder pre-set for adjustable shaft thumb turn installation.</li> <li>• To install with protective rose item 1.06458.20</li> <li>• ON REQUEST: thumb turn devices -item 1.06353.00 -item 1.06354.00</li> </ul>	<b>30/30</b>	60,0	30,0	30,0	15	1 00800 00 0	0,306	1	<b>1 0L357 07 0 12 CL</b>					
	<b>35/30</b>	65,0	35,0	30,0	15	1 00800 00 0	0,340	1	<b>1 0L357 81 0 12 CL</b>					
	<b>40/30</b>	70,0	40,0	30,0	15	1 00800 00 0	0,370	1	<b>1 0L357 12 0 12 CL</b>					
	<b>45/30</b>	75,0	45,0	30,0	15	1 00800 00 0	0,405	1	<b>1 0L357 91 0 12 CL</b>					
	<b>50/30</b>	80,0	50,0	30,0	15	1 00800 00 0	0,398	1	<b>1 0L357 90 0 12 CL</b>					
	<b>60/30</b>	90,0	60,0	30,0	15	1 00800 00 0	0,405	1	<b>1 0L357 87 0 12 CL</b>					
	<b>70/30</b>	100,0	70,0	30,0	15	1 00800 00 0	0,435	1	<b>1 0L357 88 0 12 CL</b>					

Type	Description	For locks series	L	Plins	Key item	Unit weight Pieces	ITEM						
							Type	Dim.	Hand	Fin.	Pers.	Spec.	
	• Cylinder	1A610, 11540, 11610, 11615, 50010, 50110, 50115, 50130, 50180, 50330, 54310, 50312, 54315, 54340, 54342, 54350, 54352, 54510, 54512, 54550, 54552, 54570, 54572	15	1	1 00800 00 0	0,166	1	1	0L510	00	0	12	CL
	• Cylinder with nickel-plated anti-pulling and drill resistant protective rose		15	1	1 00800 00 0	0,325	1	1	0L510	10	0	12	CL
	• Tubular cylinder	1A611, 11611, 50111, 50116, 50131, 50181, 50411, 50481, 50511, 50581, 54316, 54341	50,0	15	1 00800 00 0	0,215	1	1	0L210	50	0	12	CL
	• Pair of cylinders	50120, 50125, 50160, 50170, 50210, 50220	15	1	1 00800 00 0	0,267	1	1	0L112	00	0	12	CL
		11560, 11630, 11635	15	1	1 00700 02 0	0,267	1	1	0L114	00	0	12	CL
		11660, 11670	15	1	1 00700 02 0	0,267	1	1	0L156	00	0	12	CL
	• Pair of cylinders with external tubular cylinder	11521, 11721, 11726, 11921, 11926	50,0	15	1 00800 00 0	0,295	1	1	0L149	00	0	12	CL
		11661, 11671, 11761, 11771	50,0	15	1 00800 00 0	0,253	1	1	0L155	00	0	12	CL
	• Pair of cylinders with external tubular cylinder	1A631, 1A721, 1A731	55,0	5	1 00800 00 0	0,295	1	1	0L150	00	0	12	CL
	• Pair of cylinders with external tubular cylinder	50121, 50126, 50141, 50161, 50171, 50421, 50461, 50471, 50521, 50561, 50571	50,0	15	1 00800 00 0	0,295	1	1	0L116	00	0	12	CL
		11551, 11631, 11731, 11736, 11931, 11936	50,0	15	1 00800 00 0	0,253	1	1	0L120	00	0	12	CL

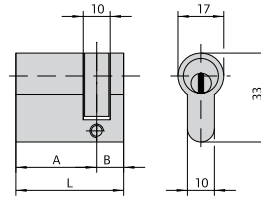


Type	Description	Door thick.	Plms	Key item	Unit weight Kg	Pieces	ITEM				
							Type	Dim.	Hand	Fin.	Pers.
	<ul style="list-style-type: none"> <li>• Plug for steel padlocks</li> <li>• 2 keys</li> <li>• Pickled brass casing</li> <li>• Complete with coupling plate</li> </ul>	15	1	1 00800 00 0	0,117	1	1	0L610	00	0 00	CL
	<ul style="list-style-type: none"> <li>• Vertical key extraction</li> <li>• Ring item 1.06021.10.0</li> <li>• Deadlock item 1.06414.25.0 or 1.06414.35.0 (to order separately)</li> <li>• Nickel-plated brass</li> </ul>	19	15	1 00800 00 0	0,150	1	1	0L410	00	0 12	CL
	<ul style="list-style-type: none"> <li>• Microswitch (7A, 250V) with welding terminals</li> <li>• Automatic return to key extraction position (0)</li> <li>• Ring item 1.06021.10.0</li> <li>• Nickel-plated brass</li> </ul>	19	15	1 00800 00 0	0,150	1	1	0L415	01	0 12	CL
	<ul style="list-style-type: none"> <li>• Microswitch (7A, 250V) with welding terminals</li> <li>• Automatic return to key extraction position (0)</li> <li>• Ring item 1.06021.10.0</li> <li>• Nickel-plated brass</li> </ul>	19	15	1 00800 00 0	0,150	1	1	0L415	03	0 12	CL
	<ul style="list-style-type: none"> <li>• Cylinder for panic exit device external drives item 1.07077.28.0</li> </ul>	15	1	1 00800 00 0	0,117	1	1	0L610	10	0 00	CL
	<ul style="list-style-type: none"> <li>• Cylinder for panic exit device external drives item 1.07077.29.0</li> </ul>	15	1	1 00800 00 0	0,117	1	1	0L610	11	0 00	CL

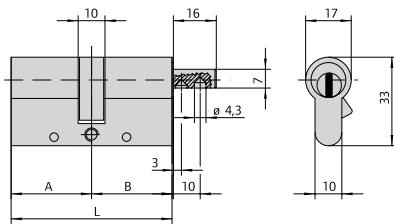
Drawings and Dimensions



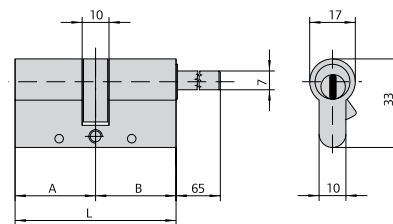
0L351



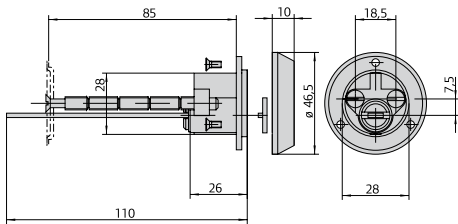
0L314



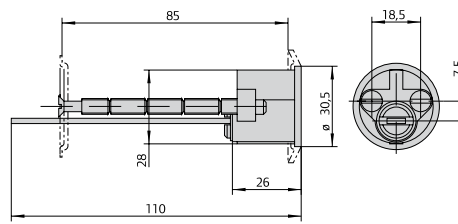
0L352



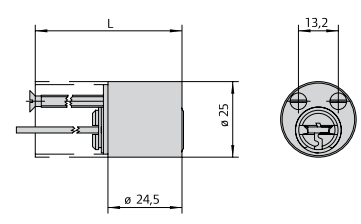
0L357



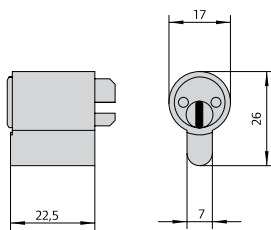
1 0L510 10 0 12



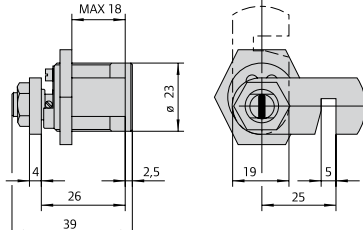
1 0L510 00 0 00



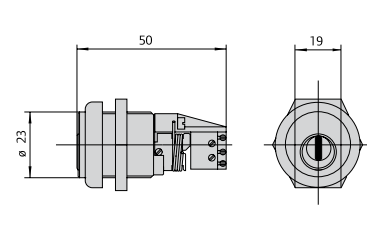
1 0L210 50 0 00



1 0L610 00 0



1 0L410 00 0 12



1 0L415 00 0 12

CISA S.p.A. reserves the right to make any changes to the products illustrated in this catalogue without prior notice. All measurements are in millimetres.

About Allegion

Allegion (NYSE: ALLE) creates peace of mind by pioneering safety and security. As a \$2 billion provider of security solutions for homes and businesses, Allegion employs more than 7,800 people and sells products in more than 120 countries across the world. Allegion comprises 23 global brands, including strategic brands CISA®, Interflex®, LCN®, Schlage® and Von Duprin®. For more, visit [allegion.com](http://allegion.com)



BRICARD Briton CISA interflex

CISA SpA  
Via Oberdan 42 - 48018 Faenza (RA) Italy  
Tel +39 0546 677111 - Fax +39 0546 677150  
[cisa.vendite@allegion.com](mailto:cisa.vendite@allegion.com)  
[cisa.com](http://cisa.com) - [cisahotels.com](http://cisahotels.com)

@cisalocks



© 2014 Allegion  
[allegion.com](http://allegion.com)